
2019 LEADERSHIP INSTITUTE BIOS



Cheryl J Archibald

Cheryl is Executive Assistant to Larry Curley at the National Indian Council on Aging. She entered the field of aging by accident when she became the caregiver for her mother in 1991. She didn't know it back then, but it was the starting place for her to recognize the need to improve services for the aging community. She continued to take care of her mother until her death in 2003. Then she worked to help the aging population navigate the systems they needed to work with to get the benefits they not only needed but deserved. In the next five years she wants to work with other organizations and individuals to put systems and people in place to help this population get the services they need.



Niki Barr

Niki is Center Director at the Edward A. Myerberg Center, Inc. Niki was the center's Fitness & Wellness Director for over six years. As a Certified Personal Trainer, Niki saw first-hand the positive impact exercise and stimulating social programs had on the aging community. She is excited to begin developing a retirement mastery program to help retirees maintain their sense of purpose and enjoy their journey!



Colleen Beach, MSW, LSW

Colleen is Specialist Professor at the School of Social Work, Monmouth University. In her current role, she teaches across the curriculum in both the Bachelors of Social Work and MSW programs. She specializes in elder justice and community living options for older adults. Her other professional experience includes over 15 years in healthcare settings serving primarily older or vulnerable adults in New Jersey. Colleen also managed the training grant for Adult Protective Services in the state of New Jersey. While a faculty member at Rutgers, she managed several continuing education certificates

2019 LEADERSHIP INSTITUTE BIOS

focused on gerontology. Colleen's goals for the future include bringing greater awareness to the elder justice crisis we have in the United States. She hopes to inspire social workers to be at the forefront of collaborating with older adults, communities, and organizations to create innovative change to better serve our aging communities' needs.



Amy Blackledge, MSN, RN

Amy is Population Health RN Supervisor at the Saint Alphonsus Health System. In this role, she leads an interdisciplinary team focused on improving health outcomes and reducing health disparities for her community members. She is a registered nurse with a Master's Degree in Nursing Leadership and is currently pursuing a Master's Degree in Business Administration. Over the next five years, Amy is looking forward to growing as a leader in the field of aging through continued work in developing and implementing sustainable models of care to address social determinants of health particularly for the underserved within her community.

Carolyn Bridgewater, MLIS, MSW, AHIP

Carolyn is Associate Librarian / Associate Professor at the LSU Health Sciences Center Library. Since 1993, she has participated in a number of seniors' health initiatives related to population aging, cultivate external funding sources and/or foster community engagement. She trained area health care professionals, librarians and consumers, on essential National Library of Medicine's (NLM) medical and health databases. She secured funding of NLM's Technology Improvement Project (TIP) award; the funded project allowed LSUHSC – New Orleans Libraries Reference staff to conduct two training sessions for staff and residents at Ville Ste. Marie, an independent lifestyle and assisted living community located in Jefferson Parish. Carolyn has also presented at conferences locally on NLM's resources for seniors. The knowledge gained from attending ASA's Leadership Institute will be used to: In the next five years, her goals are to expand and update resources on aging in the library's collection for continued support of academic and research needs at the LSU Health Sciences Center - New Orleans. She'd also like to reconnect and collaborate with the New Orleans Council on Aging, Elder Action Coalition (EAC) network within two years.

2019 LEADERSHIP INSTITUTE BIOS



Donald Brunette, MBA

Donald is Executive Director at the Access North Center for Independent Living of Northeastern Minnesota. Under Donald's direction, Access North has added Aging in Place services that include comprehensive home modification and assistive technology services. Donald is also President of the Minnesota Association of Centers for Independent Living. Donald received his graduate degree in business management in 2006. In the next five years, Donald's goal is to see Access North as the premiere Aging-in-Place resource across northern Minnesota providing in-home support, comprehensive home modification, and assistive technology and ramp options.



Fritzie B Cenatus, MEd, RN-BC

Fritzie is Project Engineer at the Age Gracefully Institute & Nurturance Gericare, LLC. She is a CORE prepared Assisted Living Facility Administrator, Board Certified Gerontological Registered Nurse, member of Florida Nurses Association, Certified Eden Alternative Associate, member of American Nurses Association, and a new member of American Society on Aging. While operating a Homemaker and Companion service, Fritzie is currently working towards developing a post- secondary learning institute where learners will be introduced to Gerontology and Aging Studies. Within the next five years, Fritzie hopes the learning institution will be fully accredited and offering pathways to serve the Aged.

Lisa Chevalier

Lisa is a Leadership Institute Participant at the Aging in America 2019 Conference.

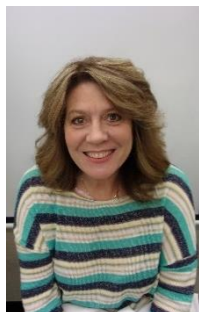


Tasha Clark-Amar

Tasha is CEO at the East Baton Rouge Council on Aging. Tasha has recently championed a tax millage for additional funding for EBR seniors. As a result of the increased funding, the agency has been able to

2019 LEADERSHIP INSTITUTE BIOS

remove seniors from all waiting lists and implement several new programs. The EBRCOA boasts a new Senior Rx Program, Lotus Pantry, and many other programs. In additions, seniors are now able to take advantage of new activities like tai chi, yoga, and Zumba. Future plans include senior living facilities, transportation, and housing depts. to better support independence and mobility.



Jowell Conway

Jowell is Program Supervisor at the Multnomah County ADVSD. As a Program Supervisor for Multnomah County Aging, Disability and Veteran services, she provides quality assurance, support, and supervision to a team of Medicaid Service case managers delivering long term care services and supports. She has had experience working in nursing home and adult care home settings as a direct caregiver, social service director and business office manager. Employed by Multnomah County for the past 23 years, Jowell has also performed various levels of case management services working to remove barriers and deliver quality services to our most vulnerable community members.



Tanya DeHart

Tanya is Director at the NorthWest Senior & Disability Services. She became Director in October 2018. Oregon is moving to a true no wrong door system for the delivery of Medicaid and SNAP benefits. This presents some unique challenges and opportunities for our Area Agency on Aging (AAA). Additionally, we are leading a statewide effort amongst all AAA's to seek and maintain sustainable funding options for our health promotion programs. Effective work toward both of these initiatives will position our AAA to be a viable partner for the delivery of high quality services to seniors and people with disabilities for years to come.

2019 LEADERSHIP INSTITUTE BIOS



Angela Di Martino, MA

Angela is Wellness Program Manager at the Curry Senior Center. She joined Curry Senior Center in 2014 as Project Coordinator for two health improvement programs, and is currently the Wellness Programs Manager, overseeing health education, wellness nursing in the home, and health and technology programs at Curry. Prior to working at Curry, Angela was a Vice President in Investment Banking Administration at Morgan Stanley. She is currently a National Board Certified Health and Wellness Coach (NBC-HWC), and holds additional certifications in Wellness Management and Guided Imagery. Angela's goals over the next five years include developing enhanced Wellness Programs combining health and technology to meet the diverse needs of vulnerable, low-income older adults in San Francisco.

Betty Eby

Betty is at the Arthur Monday Senior Center at the New Orleans Council on Aging. Betty is described as an excellent director and leader, who is frequently called upon for her knowledge of senior services. She is certified in Passenger Assistance Safety and Sensitivity (PASS) Training from the Community Transportation Association of American America and the UWM Center for Transportation Education. She serves on various boards. After Hurricane Katrina, she was appointed as Director of the Arthur Monday Senior Center where she hopes to retire.

Allyson Evelyn-Gustave

Allyson is Lead Occupational Therapist for CAPABLE at the Johns Hopkins School of Nursing. Her career started in New Jersey in various settings including in-patient and outpatient rehab, driver training, a residential and community head trauma program and her private practice, Rehab Options, specializing in cognitive remediation. She was a board member of the NJOT Association before moving to Baltimore in 1994. Ally was the local conference chairperson for the AOTA conference held in Baltimore in 1998 and has held roles on the Maryland conference committee in the past. She worked primarily in home health and acute care before venturing into the world of research as an interventionist for Johns Hopkins University School of Nursing's CAPABLE (Community Aging in Place; Advancing Better Living for Elders) study. She continues to develop curriculum and train occupational therapists and nurses to be CAPABLE clinicians as the Senior Clinical Training Specialist for CAPABLE. Her other duties include working for Johns Hopkins Home Care Group translating the CAPABLE study into a program while providing the intervention to qualifying seniors. Her goal for the next 5 years is to be an effective support person for the clinicians she trains to help expand the CAPABLE program successfully in the US and beyond. Her desire is to be instrumental in making CAPABLE a benefit for all Medicare recipients.

2019 LEADERSHIP INSTITUTE BIOS



Ryan Gadzo, MPA

Ryan is Research Analyst at the Erie County Department of Senior Services. He is responsible for department reporting, grant writing and oversight of software implementation. Ryan was also a co-lead on a grant through the Health Foundation of Western and Central New York called Aging by Design. During the planning phase, Ryan engaged a group of over 100 LGBTQ seniors to garner feedback about what types of programming they wanted for themselves. Ryan was involved in helping the department receive the Innovations in Nutrition grant through the Administration on Community Living. The focus of the grant is to allow residents of Erie and Albany counties the ability to go to participating restaurants within each county to get a healthy, well-balanced meal, at a time of their choosing and with whomever they want. The second focus of the grant was to modernize the tracking of clients within congregate dining and senior centers. In the next 5 years, he hopes to accomplish obtaining more innovative grant funding so we can make sure we are giving our senior residents access to the best services and programming, while also making sure the needs of the seniors are met. He also hopes to establish more funding streams from local funders so that the whole community is invested in helping our residents and so that they can see the good their contributions are making throughout Western New York.



Amanda Goodenow, MS, OTR/L

Amanda is CAPABLE Program Manager at the Colorado Visiting Nurse Association. Amanda began her practice more than a decade ago in acute care in Topeka, Kansas. She joined Colorado VNA in 2011 as a staff occupational therapist. In 2017 she took on a leadership role as the CAPABLE (Community Aging in Place-Advancing Better Living for Elders) Program Manager. In this role, she's overseeing the program's clinical operations, including a team of three RNs and two OTs, and a Habitat for Humanity of Metro Denver partnership. In addition, her role includes evaluation, and outreach and visibility strategies, and helping to design the growth strategy. She is actively involved in professional advisory committee and documentation committee with a focus on improving health care outcomes.

2019 LEADERSHIP INSTITUTE BIOS



Porsha Hall, MPH, MAG

Porsha is Director of Program Quality and Innovation at the SAGE. Porsha is a health gerontologist and researcher who holds over a decade of experience designing programs and initiatives to improve the health outcomes among marginalized groups of older adults. As a researcher, her most recent work has concentrated on falls prevention, exercise promotion, and the development of innovative health education interventions for an aging population. She has extensive experience in community-based participatory research, qualitative/quantitative methodology, and survey methodology. She is pursuing a Doctorate in Health Education.



Jolene Hausman, MBA

Jolene is Executive Director at the Fountain Valley Senior Center. She has been in her current role for seven months. Jolene is responsible for leading and administering all aspects of the Fountain Valley Senior Center. Prior to her work at the Fountain Valley Senior Center she has over thirteen years of experience in program management, volunteer management, grant writing and community outreach through work at county, city, state and nonprofit entities. She has a diverse background through human services ranging from AIDS, Nutrition, Education, and Hospice. Her main objective and goal over the next five years is a new building to house the Fountain Valley Senior Center. The regional recreation center would be a hub for the community as a whole, increased space for our senior programming and the ability to have cross generational programming!

2019 LEADERSHIP INSTITUTE BIOS



Christina Irving, MSW, LCSW

Christina is a Family Consultant at the Family Caregiver Alliance. She oversees the staff of the Bay Area Caregiver Resource Center who provide direct services to family caregivers, including assessment, counseling, education, and support. She has been with FCA for over 12 years, first as a Family Consultant and then as Clinical Supervisor. She hopes to be a supportive leader and advocate in the caregiving field.

Suzette Lawrence Reynolds, MSW

Suzette is Assistant Social Services Director at the New Orleans Council on Aging. Her social work career spans over 30 years, and she has served in numerous capacities at several social service agencies throughout the Greater New Orleans region, including Kingsley House Adult Services and Elderly Protective Services. Her biggest goal over the next 5 years is to provide individual counseling to seniors in the private sector.



Shontell LeBeouf

Shontell is Dir. of Operations/ Dir. of Development at the East Baton Rouge Council on Aging. She is responsible for ensuring that the day-to-day operations of the agency are effectively carried out. Over the next several years, Ms. LeBeouf will be chiefly concerned with overseeing the major expansions the agency will be making in transportation, home modifications, and the expansion of other elder services.



Tara A LeBlanc, MBA

Tara is Assistant Secretary at the Louisiana Department of Health, Office of Aging and Adult Services. Tara has served as the Assistant Secretary for the Office of Aging and Adult Services (OAAS) since

2019 LEADERSHIP INSTITUTE BIOS

November 2014. Tara has been a state civil servant for more than 25 years, with more than 13 years in the healthcare arena. Prior to her role as Assistant Secretary, Tara was the Budget Direct for Louisiana Department of Health and the Assistant Comptroller of LSU-Health Care Services Division. Tara also serves as a member of the Louisiana Development Disability Council, Governor's Advisory Council on Disability Affairs, and a board member of the National Association of State Human Services Finance Officers Organization (HSFOO).



Jerri Locke, MSRC

Jerri is Director of Healthy Aging at the Methodist Health System. At various state agencies, she handled specialty caseloads of individuals with TBI, school to work transition, and older adults. She returned to UNT to lead a Partners with Industry grant focusing on employment for the older adult with disabilities. The opportunity to return to Dallas in a career that meshed all facets of her previous experiences came with the opening at Methodist Health System. Under Jerri's direction, the healthcare system membership-based program continues to flourish and now has over 65,000 members offering over 30 programs monthly, with topics as diverse as Tai chi, computer safety, and heart health. Jerri is continually looking for ways to increase the number of participants by finding unique topics and services of interest to the members. Within the next five years, she hopes to find new partners to enhance the mission of the healthcare system, embracing the goals of the ACA, and recognizing the challenges of a quickly growing aging society as the Baby Boomers age.



Cate Lortz, BA

Cate is Regional Outreach Coordinator at the Community Preservation and Development Corporation. She has worked in various aspects of aging including senior housing construction, healthcare and affordable housing for seniors. She hopes to build a network of resources and partners that can help urban seniors successfully age in their homes.

2019 LEADERSHIP INSTITUTE BIOS



Jennifer Marchant, MSW

Jennifer is Director of Program Services at the Placer ARC. where she has been for five years. Currently, she oversees three adult day programs and a social recreation program (for both adults and adolescents) with Intellectual and Developmental Disabilities (IDD). With over 15 years of experience in the human service industry, starting with intensive mental health treatment within the private and government sectors for 10 years to her current community work in the IDD non-profit industry, her guiding value to be an advocate for others will always be her top priority. While she has many goals year to year, as she leads and guides a multitude of teams, her success will be measured by continued community integration for all while striving to provide opportunities that enhance the life of any individual that she help serve.



Juan Carlos S Martinez

Juan Carlos is a Human Services Administrator I at the Los Angeles County Workforce Development, Aging and Community Services. In this capacity, he manages the APS Information and Referral Call Center; the Center processes APS Intakes, provides information and referral services, and conducts outreach and community education. He also oversees the APS Homeless Pilot program which has collocated homeless case managers from local housing providers to streamline housing services for APS seniors and dependent adults at risk of homelessness or experiencing homelessness. He hopes to contribute to the strengthening of collaborative structures that support outcome-based strategies to meet challenges and opportunities created by a rapidly aging population.



Beth Mastel-Smith, BSN, PhD

Beth is an Associate Professor at the The University of Texas at Tyler. She has worked in gerontology for the past 28 years. Her professorial focuses are the online doctoral program and undergraduate

2019 LEADERSHIP INSTITUTE BIOS

gerontology; additionally, she and chairs dissertations related to aging and transcultural issues. She has worked in a dementia day program, geriatric care management, with women aging with disabilities, and provided community and professional geriatric education while living in Asia. Beth's current research focuses on interprofessional dementia education for undergraduate and graduate students. She and the interprofessional faculty team work closely with a local non-governmental organization to deliver a dementia care boot camp to students as well as community audiences. In the next five years, Beth hopes to support local system and policy efforts that promote age and dementia friendly communities including a continuum of services, education and caregiver support.



Diana McFail, MNM

Diana is Chief Operating Officer, Total Community Options Foundation at the NextFifty Initiative. At NextFifty Initiative, Diana manages a portfolio of active grants. She has worked in the field of aging for almost a decade, and attributes her inspiration to enter the field to her grandma and her observations of her grandma's experience of aging as well as the impact on her family as caregivers.



Tiffany D Nicolette

Tiffany is Director of Resident Services at the CHAI / Edgewood Management. Tiffany has nearly a decade of experience integrating supportive services into affordable senior housing. In her current role she leads a multidisciplinary team that works to increase access to and provides services which allow older adults to remain independent and age with dignity in the home of their choice. She is working toward a Masters of Aging Services Management. In the next five years, her biggest accomplishment will be finishing her graduate degree, with the intention of implementing her final capstone project into her current work.

2019 LEADERSHIP INSTITUTE BIOS



Shawne O'Connell

Shawne is Director of Programs at the Kimochi, Inc., where she is responsible for maintaining high standards of performance across all of Kimochi, Inc.'s human service programs: paratransit transportation, congregate and home delivered meals, residential care facilities for the elderly, active seniors social club, case management services, and family caregiver support programs. In the next five years Kimochi, Inc. will enter into its 50th year of service to seniors and their families. During this time, she hopes to lay the groundwork for Kimochi, Inc. to innovate and adapt to the changing needs of the community and the people they serve.



Cheri L. Pierson-White

Cheri is a Director at the Waukegan Township - Park Place, where she oversees all operations pertaining to the facility. She has held management positions with Waukegan Township for the past thirteen years. Cheri is also a member of the ASA Diversity & Inclusion Committee. She has also been a member of the Board of Directors for the Gift of Hope Waukegan chapter. Prior to her tenure with Waukegan Township, Cheri was a successful business owner in a highly competitive industry, which she left due to military reassignment.



Terese A Poe, BA

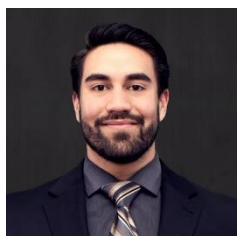
Terese is Regional Manager at the Aging and Disability Resource Consortium (ADRC) of the Northwoods. Terese is new to being the Regional Manager but has extensive experience in both the disabled and aging population program. She holds her Certification in Social Work and has worked in Wisconsin's Long Term Care programs, Adult Protective Services and a number of years as a Disability Benefit Specialist. After spending 25 years in the social services field, Terese knows the value of empowering

2019 LEADERSHIP INSTITUTE BIOS

individuals to make informed choices and streamline access to services and supports to the disabled and aging population in our communities. She also served six years in the United States Army.

Lisa Rachmuth, LMSW

Lisa is Deputy Director at the Weill Cornell Medicine/ NYC Elder Abuse Center. She manages the day-to-day operations of NYCEAC's existing MDTs and is spearheading the expansion of the MDTs to all five boroughs. Prior to joining NYCEAC, Lisa was the Director of Clinical Initiatives and Programming for NYC's Human Resource Administration's Office of Domestic Violence. Through these two positions, Lisa has worked with systems, communities and individuals affected by and dedicated to Domestic Violence and Elder Abuse. She has 29 years of social service experience, with a particular expertise in child abuse, intergenerational abuse, domestic violence and housing initiatives for individuals and families. In addition to her years of clinical and administrative experience, Lisa is an experienced workshop curriculum developer and presenter. Lisa is also an Adjunct Professor at The Silberman School of Social Work and a board member for an organization called Evenfooting.



Dayton Romero, BA

Dayton is Director of Senior Assistance Programs at the Silver Key Senior Services. Currently, he is responsible for overseeing the development, administration, and implementation of several programs including: Case Management, Guardianship, Silver Key SOS, Food Pantry/Government Food Programs, Senior Housing Navigation, and Information and Referral. Through his role as a director, he has informed, educated, and empowered people about health issues through case management staff and has trained over 2000 people in the Pikes Peak region since 2015. In addition to Dayton's role as a Director, he is a database administrator and data analyst for Silver Key. He currently serves as a Board member of Innovations in Aging Collaborative, Chairs the Pikes Peak Elder Abuse Coalition, and is secretary of the Colorado Coalition for Elder Rights and Abuse Prevention; he also continues to be an active member of the El Paso County Adult Protection Team, Community Advisory Committee for Rocky Mountain Options Long Term Care, and the Community Ethics Advisory Committee. In the next 5 years, he expects to graduate with a Master's Degree in Public Health with a focus on Leadership and Practice. During & upon completion, he plans to be a major collaborator and a leader in the field of aging for the state of Colorado.

2019 LEADERSHIP INSTITUTE BIOS



April Sandberg, MBA

April is a Program Manager and Human Resources Generalist at the Mountainland Department of Aging. She works in a managerial role focused on enhancing service experience for aging adults and the public in a three-county area. April's passion is data management systems, production of data reporting and analytics to measure service provision and quality, as well as the design of service interventions. Furthermore, April oversees all contracted in-home service providers and coordinates reimbursement systems for the department. In the next five years, April hopes to further her understanding of aging issues and solutions. In addition, April aspires to expand her leadership role at the local and state levels and advocate for aging adult issues.



Jennifer Schwartz-Crawford, LMSW, ASW-G, CDP

Jennifer is a Program Specialist, Telehealth Intervention Programs for Seniors at the Westchester County Department of Senior Programs and Services. She assists in the administration and development of Telehealth Intervention Programs for Seniors (TIPS) Wrap-Around Services and Livable Communities Programs. Jennifer came to the agency as a second-year graduate student while pursuing her Master of Social Work. She was hired as a consultant upon her graduation in 2014, before becoming an employee of the county. As one of her many roles, she is certified as a SIFI (Seminar in Field Instruction) allowing her to mentor and supervise social work students. In addition, she currently serves on Family Services of Westchester's Junior Board and has recently begun working with the Young Professionals Alzheimer's Council. Looking forward, Ms. Crawford hopes to continue to gain experience as well as further her education, training and expertise in the aging field.

2019 LEADERSHIP INSTITUTE BIOS



Solomon Shibeshi, MSc, PhD

Solomon is a Human Services Administrator at the Los Angeles County Workforce Development, Aging and Community Services. In this capacity, he worked for over eight years with various programs including Los Angeles County Area Agency on Aging (AAA) Information and Referral services, Family Caregiver Support Program Outreach, centralized intake processing of suspected elder and dependent adult abuse reports, and Homelessness Prevention and Rapid Re-Housing Program (HPRP). Currently, he works with Los Angeles County AAA as Human Services Administrator II with responsibilities including planning, coordinating and administering several programs that provide crucial, life-enhancing services for older adults and dependent adults throughout the County. Solomon's goal for the next five years is to be part of the on-going effort to make the Los Angeles region the best place for older adults and dependent adults to live and age gracefully.



Tamara Sieckman, BS

Tami is a Consumer Education & Engagement Outreach Coordinator at the Consumer Financial Protection Bureau (CFPB) - Office for Older Americans. Tami joined the Consumer Financial Protection Bureau as a founding member in May of 2011. She serves as the Outreach Coordinator in the CFPB's Office for the Financial Protection of Older Americans. Prior to joining the Bureau, Tami directed the Southern Nevada Agency Partnership in Las Vegas, NV. She managed outreach for a number of conservation initiatives including an award-winning anti-litter campaign, a volunteer program, and a cultural site stewardship program. Previously she worked at the San Diego County District Attorney's Office for nearly 20 years in their Victim Assistance Program, Major Violator Unit, and as an investigator in the Public Assistance Fraud division.

2019 LEADERSHIP INSTITUTE BIOS



Michael Stafford

Michael is a Regional Account Executive at the Open Systems Healthcare. Michael supervises day-to-day operations in Philadelphia, Wilmington, and Washington, D.C. and is also responsible for driving growth in these markets. Michael started his career as a Healthcare Recruiter in the Philadelphia branch in April 2014. After learning the market, he opened a branch in Trevoise, PA to service Northeast Philadelphia, Lower Bucks County, and Montgomery County. After five months in that office, Michael was tapped to return to Philadelphia and lead the flagship office located in Bala Cynwyd, PA. He grew and managed that location until his promotion to his current position of Regional Account Executive in May 2016. Michael serves on the Corporate Compliance Committee and Corporate Steering Committee for Open Systems Healthcare. Michael's interest in the field of aging arose after he provided hospice care for his grandmother while she was battling pancreatic cancer. This experience led to the career that has brought Michael here today. His hope for the next five years is that he will drive innovative change in the field of aging so that healthcare is available to all people in need. He will continue to push himself and his Company to explore all opportunities that make the aging experience comfortable and dignified.



Lisa Sullivan

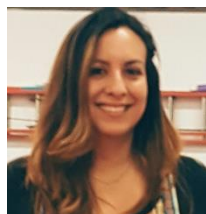
Lisa is a Program Officer at the NextFifty Initiative. In her role, she aims to further NextFifty Initiative's mission by changing the landscape of how people view aging. She is functioning as an ambassador for the organization, developing and maintaining relationships with community organizations and nonprofits; reviewing grant proposals; and ensuring grant applications and awarded projects align with the organization's overall mission and vision. Lisa has spent more than a decade in the nonprofit sector, primarily in the health industry. She has extensive experience in program coordination, fundraising, development, volunteer management, and has worked in the field of aging for over seven years. Lisa hopes that her biggest accomplishment in the next five years is to help Colorado become the top age-friendly state in the nation.

2019 LEADERSHIP INSTITUTE BIOS



Micah Taylor

Micah is a Social Services Coordinator II for PK Management, LLC. He currently works at a HUD subsidized apartment building, Baldwin Towers, located in the Pittsburgh, PA Metropolitan Area. Micah assists the 100 residents at the property with onsite case management, advocacy, conflict resolution and crisis management while coordinating educational and wellness programs to aid residents with aging in place. Micah has been employed with PK Management for four years and in the social work field for 12 years. He has a Bachelor's Degree in Social Work and is preparing to graduate with a Master of Social Work Degree in May of 2019 from California University of Pennsylvania. Micah's previous work experience includes community organizing, mental health, substance abuse, and medical social work. In the next five years Micah hopes to pursue clinical social work licensure and to help PK Management revolutionize housing for seniors through innovative programming, evaluation, research, and outstanding leadership.



Serena Thompson

Serena is a Program Director - LTSS Specialty Product Organization at the Anthem. She is focused on staying current with the challenges and resources that exist within the aging landscape and using that information to enhance our current programs and address gaps in services by working collaboratively with community and national partners. Prior to this position, she worked in case management serving the elderly and disabled populations of rural New Mexico. She considers herself granted a true privilege of being a primary caretaker alongside other family members for her dear grandmother through the end of life and is preparing for her mother's aging journey as an only child. Within the next 5 years, she hopes to be a part of innovative program development to enhance caregiver supports. On a personal note, she hopes to partner with her mom to establish a solid plan for aging and retirement that promotes her ongoing independence and joy in life.

2019 LEADERSHIP INSTITUTE BIOS



Amelia Tucciarone, MA, MSW, LISW-S

Amelia is a Quality Assurance Administrator at the SourcePoint. She is responsible for overseeing compliance requirements, identifying and assisting to address service gaps, and demonstrating to stakeholders the quality of the programs and services supported by SourcePoint. Amelia began working with older adults at the age of 16 and has been involved with the aging community in a variety of capacities ever since. In 2009, as an AmeriCorps VISTA, Amelia supported a wellness program for long-term care facility residents and built a volunteer-based respite program for caregivers of older adults. In the next 5 years, Amelia hopes to be working on innovative solutions to address the increasing service need in Central Ohio as both the aging and general population continue to experience an extreme rate of growth.



Silvia Valdivia, MSW

Silvia is a Human Services Administrator II for Adult Protective Services at the Los Angeles County Workforce Development, Aging and Community Services. Silvia was raised in a small town in Bolivia, South America. She emigrated to the United States 28 years ago. Ms. Valdivia has been employed with Los Angeles County for 25 years, and has dedicated nearly her entire county career serving the abused and neglected elder and dependent adult population in Los Angeles County in different capacities: Field Social Worker, Social Services Supervisors, and Human Services Administrator I. During her different assignments in Adult Protective Services (APS), Silvia has continued to show a relentless support and advocacy on behalf of the older and dependent adults she serves. She also has a Certificate in Public Assistance and a Certificate of Management Development Program. Silvia is excited about the prospect of using technology and the creation of Mobile Teams to improve productivity and streamline processes in the next five years.

2019 LEADERSHIP INSTITUTE BIOS



Paula Wanken

Paula is a Support Services Coordinator at the AACOG Area Agencies on Aging. Paula was promoted from Administrative Assistant after six years of progressively increased responsibilities, including grant writing and fiscal/budget support. Paula has more than 30 years' experience in providing administrative support in a variety of sectors, from non-profit to higher education to government social services. Paula seeks to hone her leadership skills to move into a supervisory role.



Lisa Weitzman, LISW-S

Lisa is a BRI Care Consultation Manager of Business Development at the Benjamin Rose Institute on Aging. In this role, she oversees the development of strategic partnerships to drive the delivery of BRICC and spearheads the development and implementation of a medically-tailored meals program for chronically-ill older adults discharging from the hospital. As a BRICC Master Trainer, she also supervises Care Consultants working directly for BRIA. Weitzman joined BRIA in 2018 as a BRICC Care Consultant and Assistant Master Trainer. Her early experience focused on individuals with chemical addictions and mental health diagnoses discharging from prison. Prior to joining BRIA, Weitzman worked for Jewish Family Services as a direct practice social worker with low-income older adults, providing counseling, case management, and advocacy on their behalf. Weitzman currently serves on the founding board of Courage to Caregivers and as an active member on the Council on Older Persons and the Alzheimer's Association's Community and Support Services Committee. In the next five years, Weitzman hopes to be recognized as a thought leader at BRIA, having successfully launched BRIA's delivery of BRICC through multiple community partnerships and re-imagined/increased BRIA's visibility among consumers/end users.

2019 LEADERSHIP INSTITUTE BIOS



Kevin Ye

Kevin is the Senior Services Program Director at Satellite Affordable Housing Associates. He has worked in the social services field for over 8 years. Kevin started his career as a Service Coordinator to provide case management and referrals to the residents at a senior housing complex in Oakland, California. He was promoted to be Resident Services Manager in his second year with the organization. Kevin has been active in advocacy for affordable housing and services. Over the years, he was involved in grant requisition and pilots to improve service quality, led in data analysis and developing database guidelines, and managed third-party contracts with local service providers and housing authority. Kevin stepped into his current role in 2018 to support and manage overall service delivery for the organization's senior portfolio. He will continue pursuing greater outcomes beyond housing stability for seniors and collaborating with innovations in the aging services field to deliver outstanding resident services for years to come.